



3600EX 4100NS 4100SL 4800DW WS1 PPC

PPF/PHV 120-36

### Single Penetrations

Horizontal (Floor/Ceiling) or Vertical (Wall)

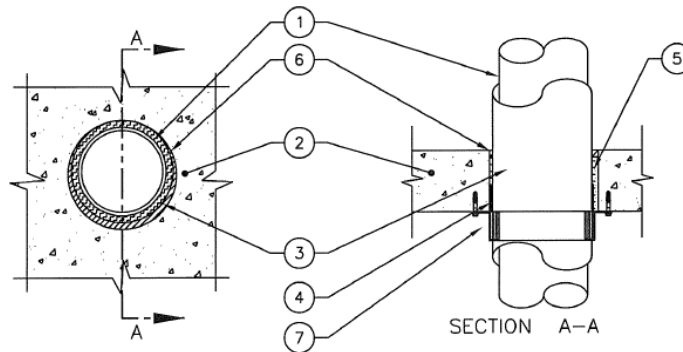
Test Standards: ASTM E-814, UL 1479: Non-metallic Open and Closed Systems

ULC S115-M11 Non-metallic Open and Closed Systems

Test Furnace Internal Positive Pressure Differential – 50 Pa (0.2 in. of water)

CSI Code: 07 84 13 Penetration Firestopping

Penetrating Material & Size	Max Hole Size	Annular Space	Fire "F" Rating	Fire/Hose "FH" Rating	Temp Rating "FTH" Rating
Polypropylene Pipe 2 – 6" (OD) Centrotherm PP Vent Pipe Or Equivalent	8" (203mm)	1/8 – 1" (3 – 25mm)	Up to 2 Hr	Up to 2 Hr	Up to 2 Hr



#### System Design Instructions

- 1. Penetrating Item:** Centered or offset in hole, see table above. Single penetrations only, maximum hole size not to exceed table above.
- 2. Floor or Wall Assembly:** Code conforming 2 hour rated floor or wall assembly having a min. nominal 4 1/2"(115mm) thick lightweight or normal weight concrete or hollow-core concrete. Wall may also be constructed of nominal 8"(203mm) thick concrete blocks (filled or unfilled).
- 3. Pipe Covering Material:** – Fiberglass Insulation – Single layer of 1/2" (12 mm) thick fiberglass insulation installed as per third party agencies Flame Spread and Smoke Development Listing. Insulation to be tightly butted to top and bottom of collar for both floor or wall assemblies. All seams longitudinal and traverse joints to the sealant with min 2 in. (51mm) wide aluminum foil tape.
- 4. Firestop System, Component 1:** PFP Partners – WS1 Wrap Strip\* – Nominal 1/8" (3 mm) thick intumescent material supplied in 2"(50mm) wide strips. Min 1 layer of strip to be wrap tightly round penetration and fastened in place with aluminum foil tape. Wrap strip to be flush with bottom surface of floor or both sides of the wall.
- 5. Firestop System, Component 2:** Filler material, mineral rock wool insulation with a minimum density of 4-6 PCF (68 kg/m<sup>3</sup>) compressed a minimum of 25% into the annular space at a minimum depth of 2" (102mm) on each side of the floor or wall assembly. Recess filler material 1/2" (13mm) for sealant placement, not required for wall assemblies. For walls, filler material to be flush with both sides of the assembly.
- 6. Firestop System, Component 3:** PFP Partners – Firestop 3600EX\*, 4100NS\*, 4100SL\*, or 4800DW\* installed at a minimum thickness of 1/2" (13mm) within the annulus on top surface of floor assembly, not required for wall assemblies. On 0 – 1/4" (0 – 6 mm) annular spaces, a 1/2" (13 mm) diameter fillet bead must be placed around the penetrating item.
- 7. Firestop System, Component 4:** PFP Partners – Plastic Pipe Collar\* (PPC) specifically sized for diameter of pipe. PPC secured to floor/ceiling assembly or wall assembly using 1/4"(6mm) diameter by 1-1/4"(32mm) long steel masonry anchors over fender washers. For walls, the system shall be symmetrical, with PPC installed on each side of the assembly and fixed in the manner as described for floor penetrations.

\*WH Labeled Component

**ITS** Intertek Testing Services

FL06/13 (1)