

VENTILATION

Smart ventilation,
healthy living

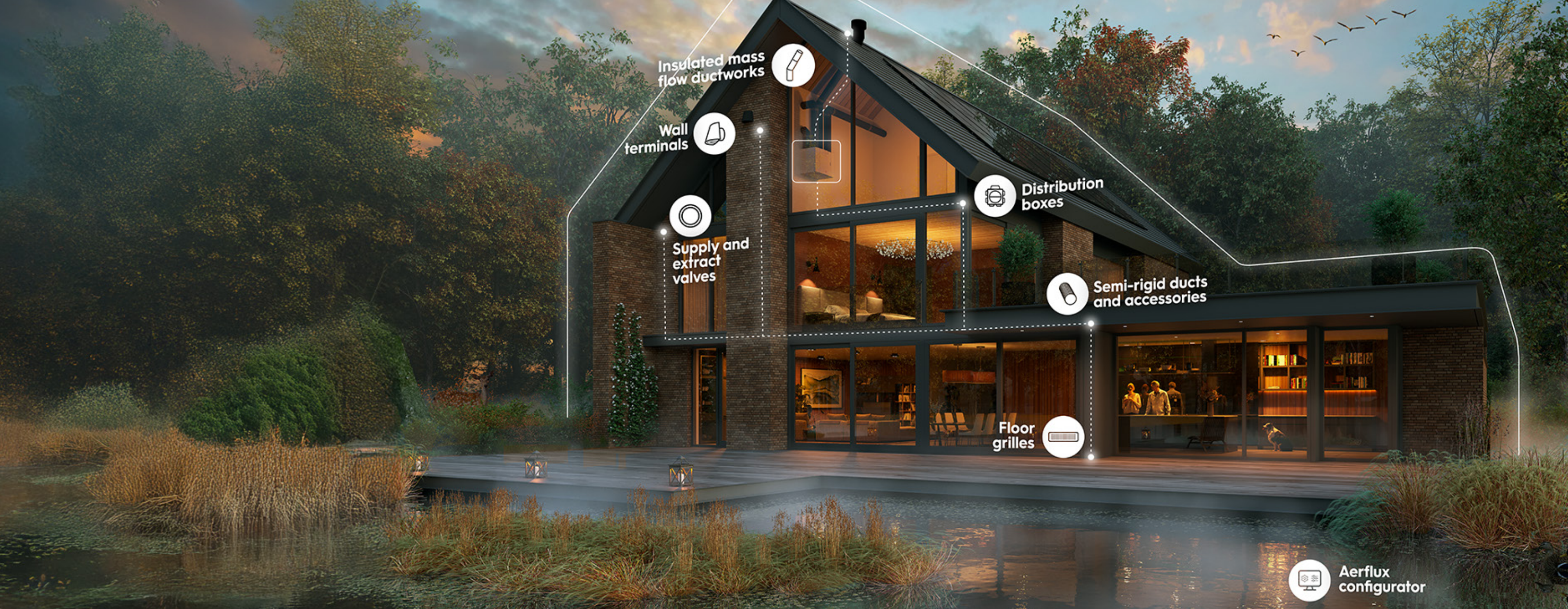


ubbink

Build smart.



VENTILATION



THE FUTURE OF INDOOR VENTILATION STARTS HERE

With buildings becoming more airtight and energy-efficient, reliable ventilation is essential. We believe that every home deserves clean, fresh air, because healthy living starts with a healthy indoor climate.

That's why we develop smart, sustainable ventilation solutions, enabling professionals to easily equip homes for lasting comfort and well-being.

Our complete range is designed with the installer in mind: quick to configure, easy to install, and built to perform. From intelligent planning tools to high-performance ductwork, every component works together to ensure top indoor air quality with minimal environmental impact.

Durable, efficient, and future-proof, Ubbink's integrated ventilation system is the smart choice for healthy living.



Aerflux configurator

Smart tool for fast, accurate ventilation design.



Ventilation ductworks

Delivers fresh air and removes stale air efficiently.



Insulated mass flow ductworks

Minimizes energy loss and prevents condensation.



Wall terminals

Ensures steady airflow.



Supply and extract valves

Regulates and evenly distributes airflow.

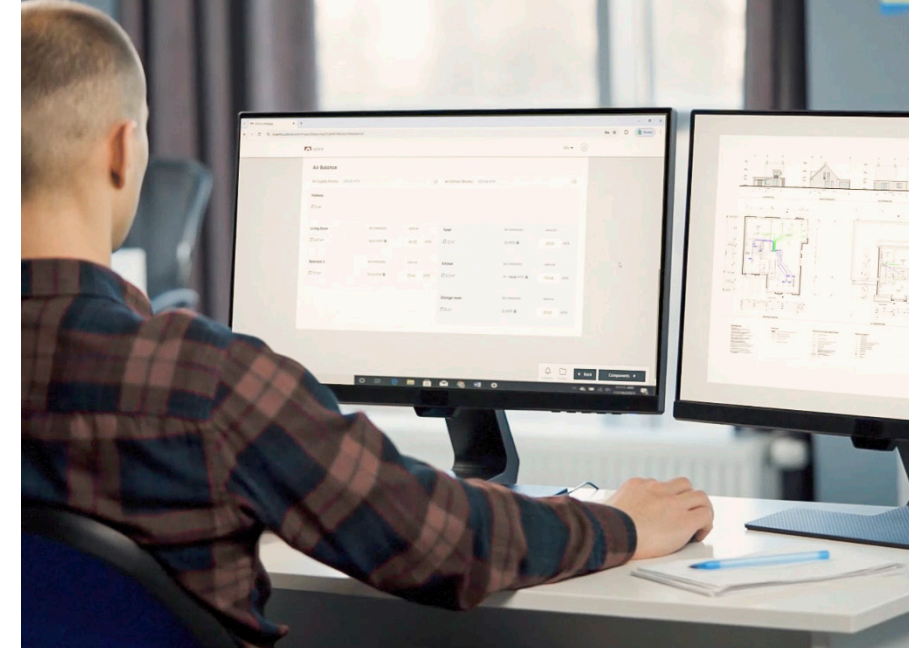
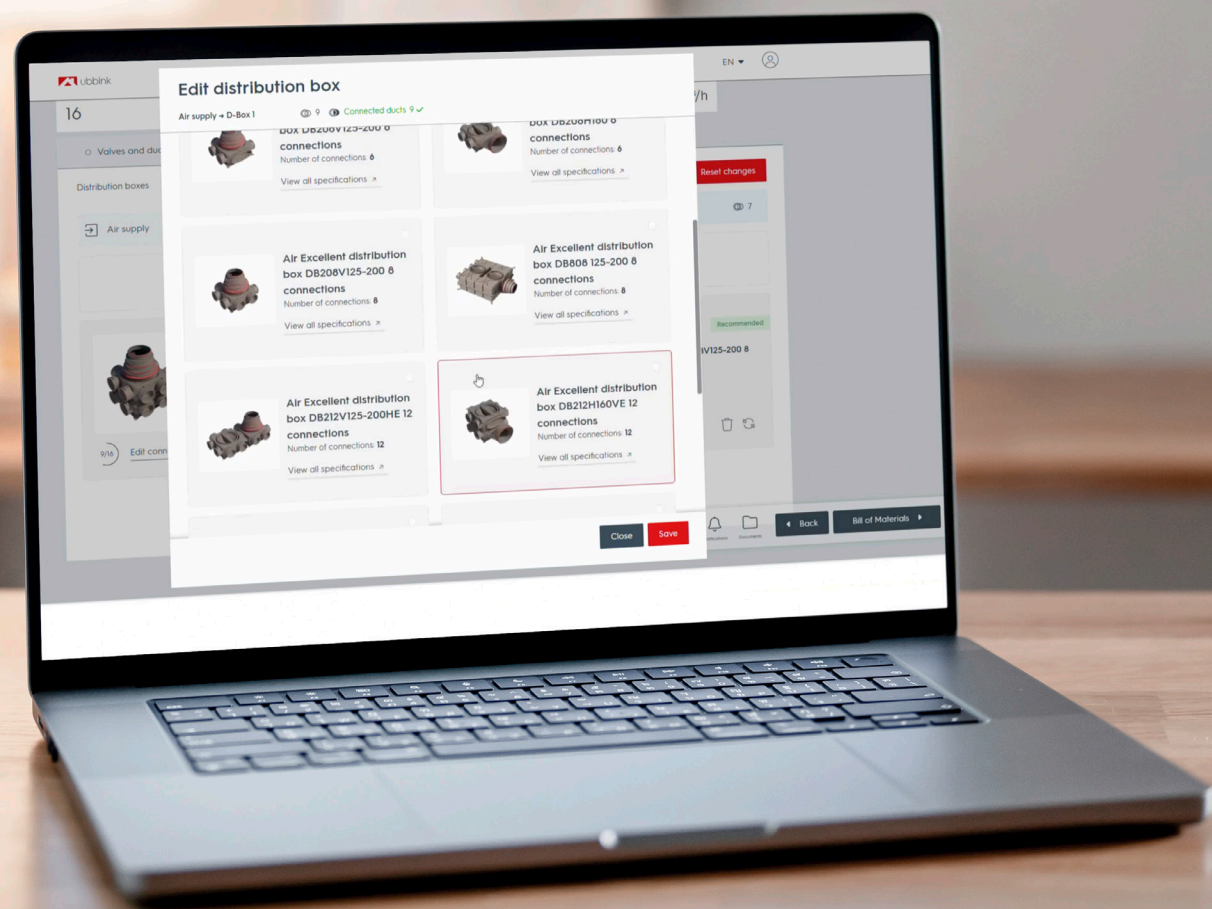


Aerflux configurator

Start every project with precision and confidence

Smart design begins with smart planning and the Aerflux Configurator gives you the clarity to get every detail right from the start. This smart tool simplifies the process of calculating ventilation requirements for the entire home in just a few steps, ensuring precision every time.

From generating airflow calculations to recommending the best components for your project, Aerflux makes designing ventilation systems faster and more reliable. Its easy-to-use interface and detailed reporting save time on-site, providing you with all the details needed to implement a high-performing ventilation system.



Aerflux

How it works

The Aerflux Configurator guides you through the process in three simple steps:

1. Set up your project

Name your project, specify the house location, and enter key details for easy access and future modifications, whether on desktop or mobile. You can even calculate the ventilation needs of multiple spaces under the same project.

2. Enter room sizes

Define your building's layout by adding floors and individual rooms. For each room, input the surface area.

3. View instant calculations

Once the room data is entered, the configurator automatically calculates the ventilation needs per space based on legal requirements, adjusting to the preferred airflow. If the air volume doesn't meet the standards, you'll receive a notification to ensure compliance.

From calculation to implementation

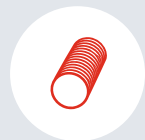
Once your calculations are complete, the Aerflux Configurator immediately generates the necessary components, air balancing, and a bill of materials. You can adjust component choices, quantities, and duct lengths based on the project's unique needs.

Your complete project package

With the configurator, you receive detailed reports that include all selected components, quantity breakdown and downloadable technical documentation. It's everything you need to finalize the project and ensure seamless installation.



Start your calculation

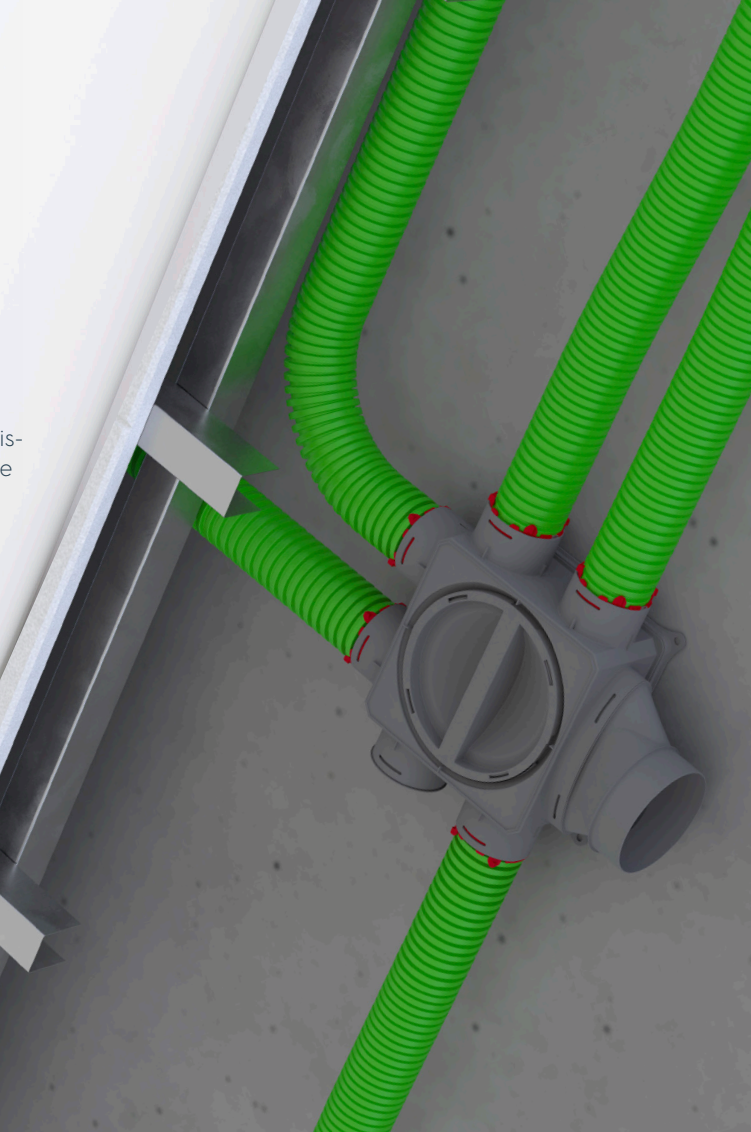


Air Excellent ventilation ductworks

Healthy air distribution, fast and professional installation

Every efficient ventilation system starts with a reliable air distribution network. Air Excellent is Ubbink's high-performance ductwork solution, designed for flexibility, ease of installation, and consistent comfort. Meeting the most restrictive ATC1 airtightness class, it ensures clean, healthy airflow throughout the home. From small renovations to large-scale new builds, Air Excellent simplifies every project while guaranteeing optimal indoor air quality.

This complete, modular system includes semi-rigid ducts, a wide range of accessories, and universal distribution boxes. Ducts are available in circular shape, featuring antistatic and antimicrobial properties to support a healthier indoor environment.



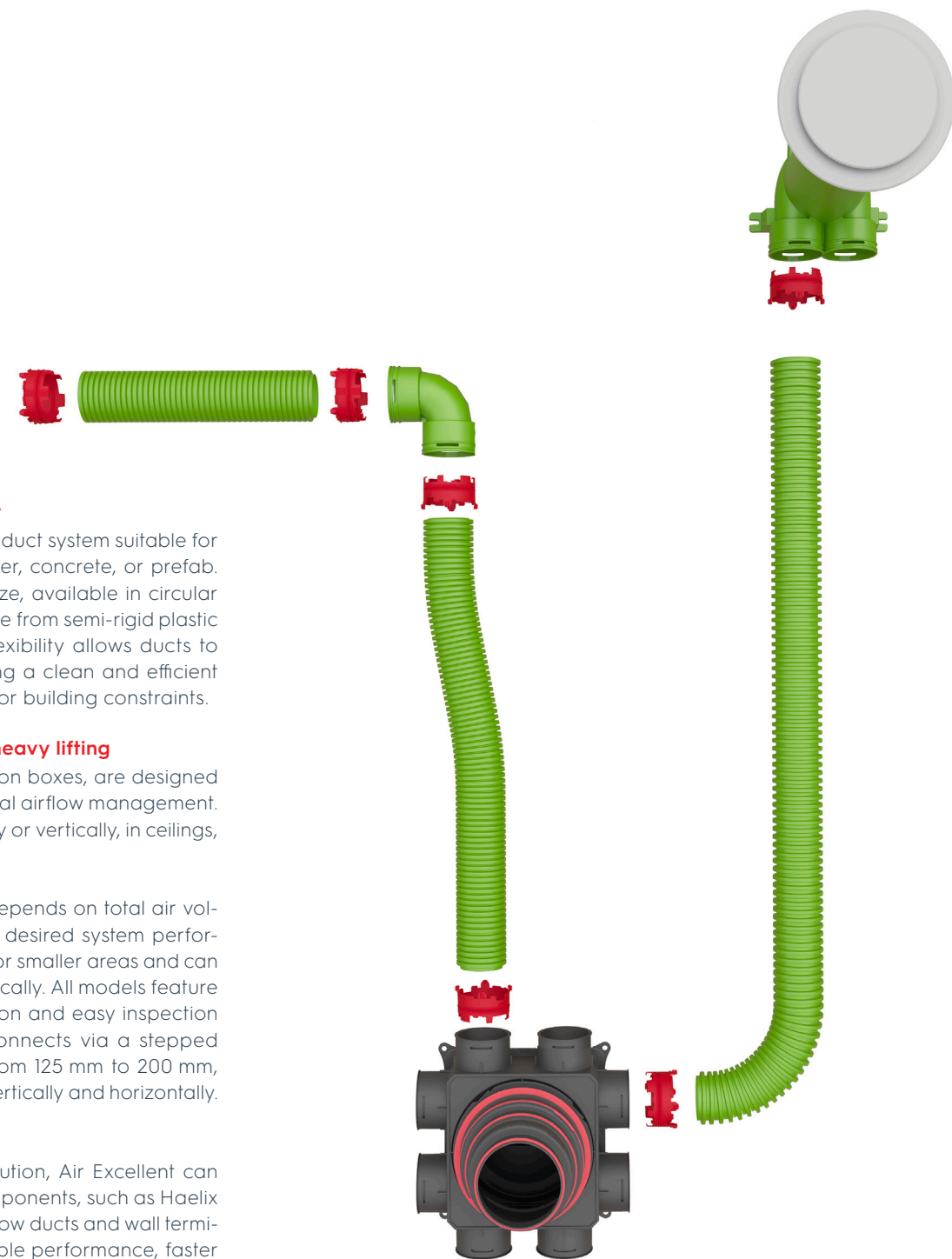
Designed for speed, built for quality

Air Excellent's mechanical connections click securely together, reducing installation time and guaranteeing an airtight system that meets the most restrictive ATC1 class, from the distribution boxes all the way to the valve adaptors. Its airtight construction delivers reliable airflow, energy efficiency, and a comfortable indoor environment. The robust and durable design keeps connections firmly in place, allowing for easy maintenance and cleaning.

The Air Excellent system is certified by TÜV SÜD and ISEGA.

BIM-ready design and fast commissioning for lifelong performance

All Air Excellent components are available as BIM files, enabling fully automated project planning. Commissioning is just as fast and intuitive: using the Aerflux Configurator, installers can balance airflow per room in minutes. By trimming pre-installed restrictor rings in the distribution boxes there is no need for flow meters or complex calibration, ensuring each room receives exactly the supply and extract airflow it requires.



The right duct for every project

Air Excellent provides a versatile duct system suitable for every type of construction: timber, concrete, or prefab. The system includes one duct size, available in circular shape, supplied on rolls and made from semi-rigid plastic for easy handling on-site. Its flexibility allows ducts to curve around obstacles, ensuring a clean and efficient installation regardless of layout or building constraints.

Distribution boxes that do the heavy lifting

Air Excellent's modular distribution boxes, are designed for flexible installation and optimal airflow management. They can be mounted horizontally or vertically, in ceilings, floors or walls.

The choice of distribution box depends on total air volume, number of duct runs, and desired system performance. The DB200 serie is ideal for smaller areas and can be extended horizontally or vertically. All models feature openings for flexible configuration and easy inspection access. Mass flow ductwork connects via a stepped adaptor, adapting diameters from 125 mm to 200 mm, with connections possible both vertically and horizontally.

A system that works together

To enhance your ventilation solution, Air Excellent can be paired with other Ubbink components, such as Haelix valves, Aerfoam insulated mass flow ducts and wall terminals. Together, they deliver reliable performance, faster installation, and peace of mind on every project, ensuring a healthy, comfortable indoor environment.



Aerfoam insulated mass flow ductworks

The insulated ductwork system for mass flow applications

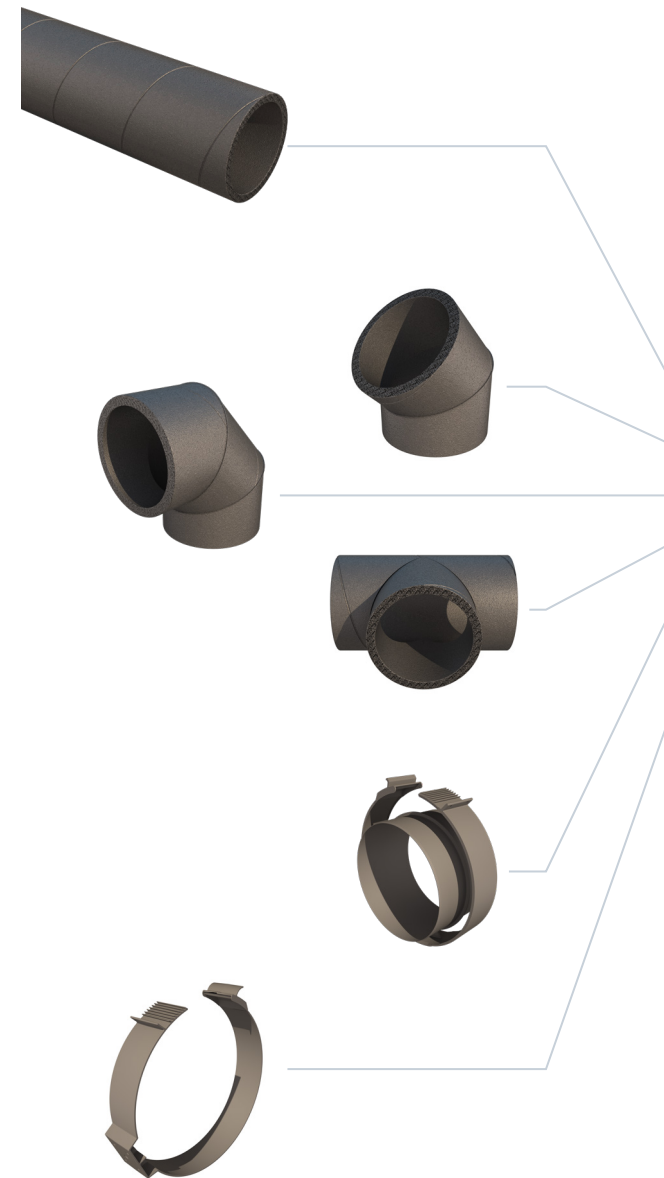
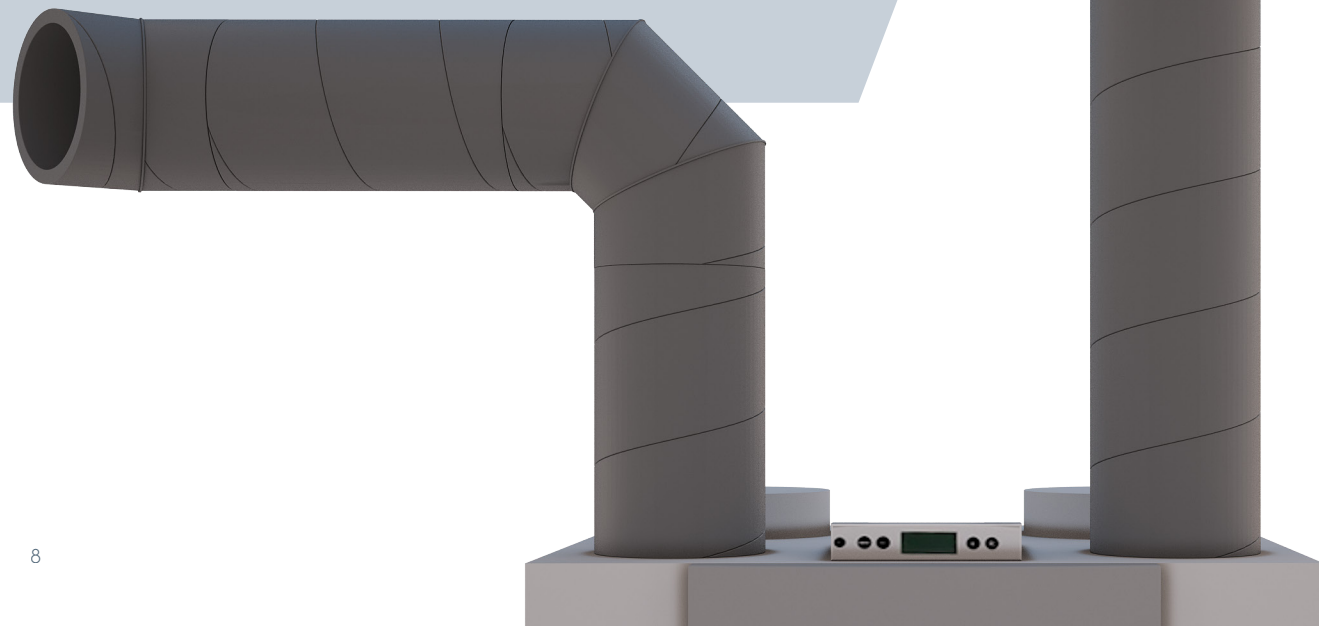
To move air volumes efficiently, insulation and airtightness are key, that's where Aerfoam comes in. This complete and universal ductwork solution connects central mechanical ventilation units, roof or wall terminals, and distribution boxes. Designed for use in both central mechanical ventilation and domestic hot water heat pump systems, Aerfoam ensures optimal performance and comfort.

Thanks to its integrated insulation, Aerfoam minimizes the risk of condensation and energy loss.

Made from lightweight, impact-resistant EPE, Aerfoam is easy to cut, handle, and install. Its strong, airtight mechanical connections need no tape, glue, or screws, saving time while ensuring reliable performance. With a full range of ducts, bends, and accessories, Aerfoam delivers an efficient, future-proof ductwork solution for residential ventilation.

Key features of the Aerfoam ductwork system:

- Insulated, minimizing the risk of condensation and energy loss
- Smooth, non-porous inner surface for minimal pressure loss and low fan energy use
- Airtight mechanical connections
- Lightweight, flexible, and impact-resistant EPE material
- Quick and safe to install
- Maintenance-friendly
- Tool-free assembly and easy to dismantle



A complete system

Aerfoam is available in two diameters: 125 and 180 mm. Each diameter includes a full set of compatible fittings: bends, T-pieces, connectors and wall brackets.

Component overview per diameter:				
Diameter (mm)	Ducts	Bends	Branches	Accessories
125	2 m	45°, 90°	T-piece	Connector, wall bracket
180	2 m	45°, 90°	-	Connector, wall bracket

Universal compatibility

Aerfoam works with nearly all central ventilation units and fits any construction type from single-family homes to apartment blocks, from timber frame to concrete, from prefab to traditional builds.



Contego wall terminal

Reliable wall penetrations that perform

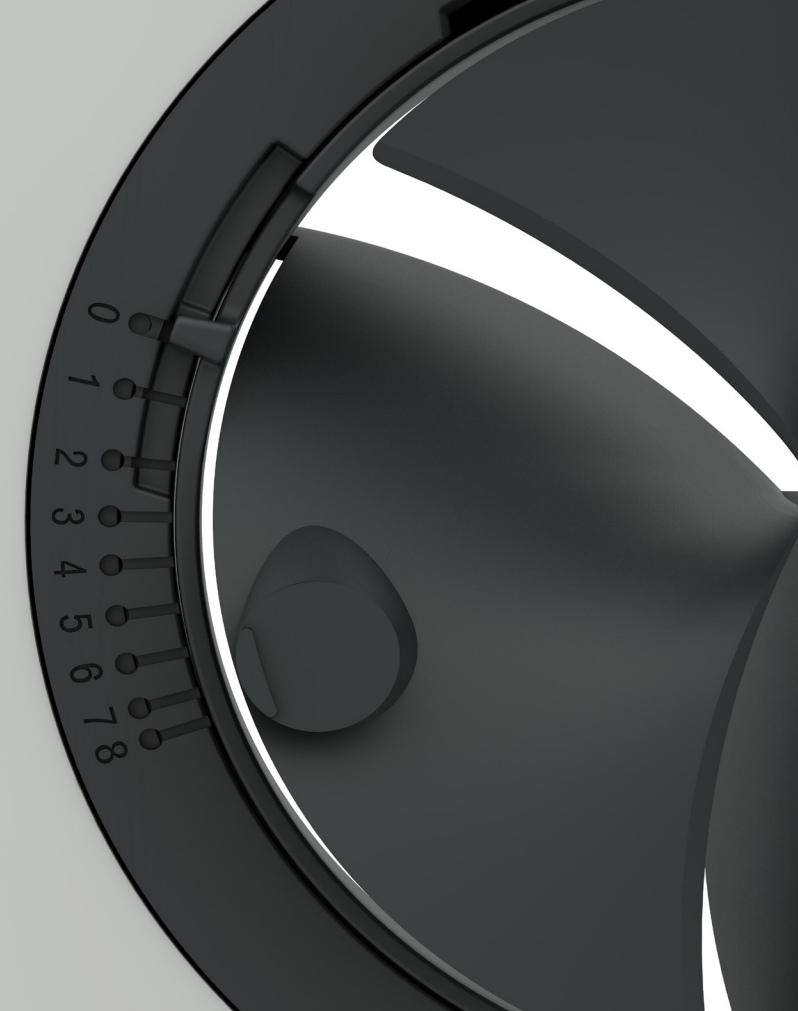
When installing central mechanical ventilation systems, wall terminals play a critical role. They connect the indoor ductwork to the outside air and, if not done properly, these points can become weak spots in the building envelope. That's why we offer the high-performance Contego wall terminal, designed to meet today's demands for energy-efficient and watertight construction.



Haelix supply and extract valve

Where performance meets design

The final touch matters and with the Haelix valve, you can deliver both technical precision and visual harmony. Haelix valve ensure efficient airflow control and a seamless aesthetic finish, fitting perfectly into Ubbink's Air Excellent system for quick, tool-free installation and lasting reliability.



Built for speed and performance

The Contego wall terminal is designed to make your installation process straightforward and reliable from planning through to on-site execution. The latest generation combines smart design with practical advantages that help you work faster and deliver high-performance results.



Faster, more precise installation

Ubbink's wall terminal features a perpendicular penetration, allowing clean, round holes through the façade for quicker and more accurate installation, especially with insulation layers. Installation is made even easier by its two-part design: a base plate is fixed to the façade first, and then the finishing cap snaps on top, ensuring easy access and a neat appearance.

Watertight and energy-efficient

The wall terminal is designed to maintain the full integrity of the building envelope. Thanks to its mechanical connection to the duct system, it guarantees reliable airtightness. Its integrated design also ensures watertight performance at the façade. The result: no uncontrolled air leakage, no moisture intrusion, and optimal energy efficiency with long-term durability.

Smart, compact designs

The Contego features shorter internal duct lengths and optimised airflow to reduce pressure losses, resulting in quieter operation and lower fan energy use. Suitable for central mechanical ventilation systems, handling both air supply and extraction, it integrates seamlessly with Ubbink's ductwork systems, such as Aerfoam.

Ready for any wall

Available in 125 mm and 180 mm diameters, the Ubbink Contego wall terminal integrates seamlessly into any façade. Its powder-coated finish ensures durable, UV-resistant protection, while the integrated grille prevents birds and small animals from entering. Designed for both new builds and renovations, it offers a durable and aesthetic solution for every project.



The Haelix valve is all about ease and efficiency on site. The valve clicks effortlessly into place, fitting the Ubbink Air Excellent adaptor. The EPDM seal-ring ensures a secure, airtight connection for a fast and professional result.

Haelix is suitable for both air supply and extract applications, and adaptable to walls or ceilings. Its fan-shaped air distributor optimizes airflow using the Coanda effect, delivering quiet operation and maximum comfort.

The integrated 9-stage flow restrictor allows precise air volume adjustment, accommodating system variations with ease. Meanwhile, the border flange prevents dust deposits on surfaces, keeping the finish clean and neat over time.

Why Haelix?

- Effortless installation with tool-free placement
- Flexible design for walls and ceilings
- Enhanced airflow for superior comfort and efficiency
- Clean, modern look to complement any interior



ENERGY



VENTILATION



BUILDING



Centrotherm Eco Systems LLC

@ info@centrotherm.us.com •  www.centrotherm.ca

Copyright © 2026 Ubbink | Content is subject to change without notice; no liability for errors and misprints | Availability and configurations may differ per country. | UB-2026-03-V01-CA-EN